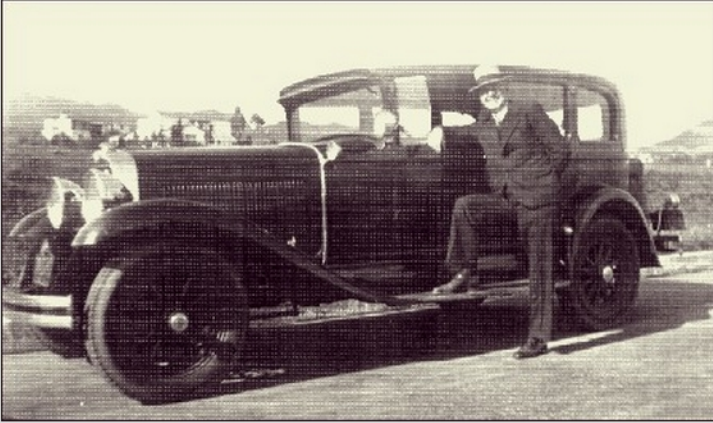


Mildred's Cars



1931 Studebaker (Jack's)



1938 Chevrolet (Jack's)



1950 Chrysler Windsor (bought in 1952 from Jack's estate)



1950 Chrysler Windsor (stock photo)

Mildred's Cars



1940 Oldsmobile (bought new in March 1940)



1946 Chrysler (bought used in July 1950)

Mildred's Cars



1953 Chrysler New Yorker (bought used in 1956)



1956 Chrysler (bought used in Dec 1958)

Mildred's Cars



1961 Chevrolet Impala (bought new in fall 1961)



1964 Buick Skylark (bought new in fall 1964)

Mildred's Cars



1965 Chevrolet Caprice (bought new in summer 1965)



1968 Chevrolet Caprice (bought new in May 1968)

Sylvia's Cars



1952 Ford Customline (bought used in Sep 1955)



1957 Ford Custom (bought new in June 1957)

Sylvia's Cars



1961 Mercury Comet (bought new in Jan 1961)



1965 Mercury Comet (bought new in July 1965)

Sylvia's Cars



1972 AMC Hornet Sportabout wagon (bought new in fall 1971, sold in Feb 1974)



1968 Chevrolet Caprice (transferred to me in Feb 1974)

Sylvia's Cars



1978 Chevrolet Monte Carlo (demonstrator, bought in Aug 1978)



1991 Buick Regal (bought used in Jan 2003, sold in Nov 2009)

Sylvia's Cars



1965 Mercury Comet - Interior



1972 Hornet Sportabout Wagon
(catalog photo)



1978 Chevrolet Monte Carlo -
Interior



1991 Buick Regal - Interior